

Biotinylated Human Peptide Ready HLA-E*01:03&B2M Monomer Protein



Cat. No. MHC-HM42RB

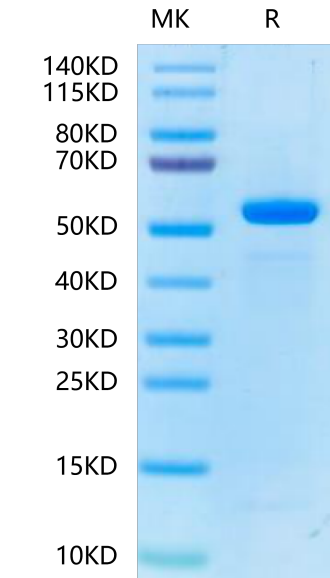
Description	
Source	Recombinant Biotinylated Human Peptide Ready HLA-E*01:03&B2M Monomer Protein is expressed from HEK293 with His tag and Avi tag at the C-Terminus. It contains Gly22-Thr302(HLA-E*01:03) and Ile21-Met119(B2M).
Accession	P13747(HLA-E*01:03)&P61769(B2M)
Molecular Weight	The protein has a predicted MW of 48.30 kDa. Due to glycosylation, the protein migrates to 50-60 kDa based on Bis-Tris PAGE result.
Endotoxin	Less than 1 EU per µg by the LAL method.
Purity	> 95% as determined by Bis-Tris PAGE > 95% as determined by HPLC

Formulation and Storage	
Formulation	Lyophilized from 0.22 µm filtered solution in PBS, 100mM L-Arginine (pH 7.4). Normally 8% trehalose is added as protectant before lyophilization.
Reconstitution	Dissolve the lyophilized protein in distilled water. Please refer to the Certificate of Analysis for detailed instructions.
Storage	-20 to -80°C for 12 months as supplied from date of receipt.-80°C for 3 months after reconstitution.Recommend to aliquot the protein into smaller quantities for optimal storage. Please minimize freeze-thaw cycles.

Background	
HLA-E*01:03&B2M&Peptide ready Monomer is absent from peptide, namely peptide-receptive MHC. It can be loaded with antigenic peptides matching HLA-E*01:03. Peptide ready MHC molecules comprising human HLA alleles and B2M, which can be readily tetramerized and loaded with peptides of choice in a high-throughput manner.	

Assay Data

Bis-Tris PAGE



Biotinylated Human Peptide Ready HLA-E*01:03&B2M Monomer on Bis-Tris PAGE under reduced condition. The purity is greater than 95%.

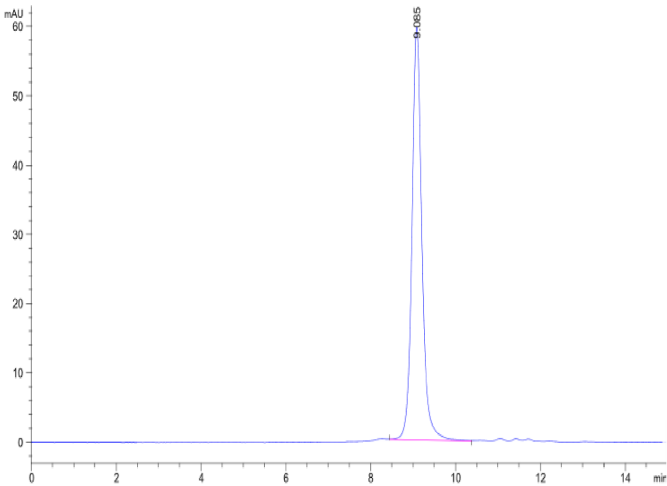
SEC-HPLC

Biotinylated Human Peptide Ready HLA-E*01:03&B2M Monomer Protein

Cat. No. MHC-HM42RB



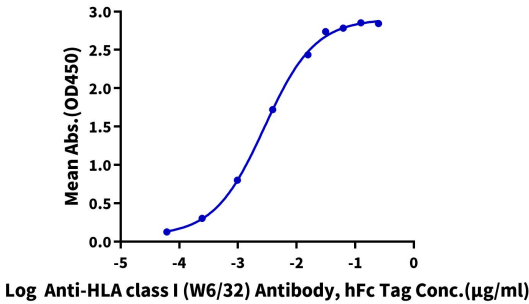
Assay Data



The purity of Biotinylated Human Peptide Ready HLA-E*01:03&B2M Monomer is greater than 95% as determined by SEC-HPLC.

ELISA Data

Biotinylated Human Peptide Ready HLA-E*01:03&B2M Monomer, His Tag ELISA
0.1µg Biotinylated Human Peptide Ready HLA-E*01:03&B2M Monomer, His Tag Per Well



Immobilized Biotinylated Human Peptide Ready HLA-E*01:03&B2M Monomer, His Tag at 1µg/ml(100µl/well) on the streptavidin precoated plate(5µg/ml). Dose response curve for Anti-HLA class I (W6/32) Antibody, hFc Tag with the EC50 of 2.8ng/ml determined by ELISA (QC Test).